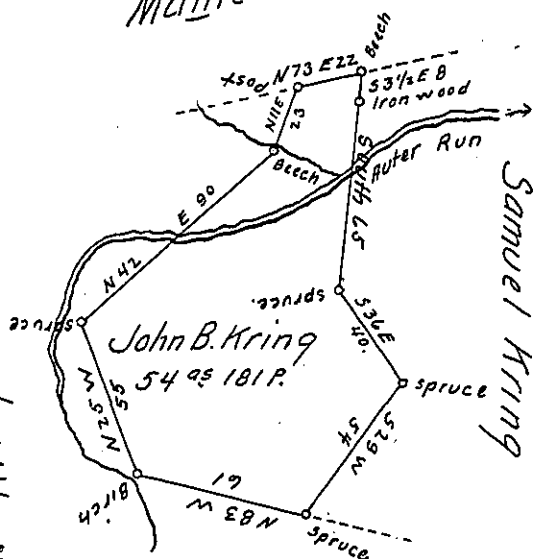


212-261
Mathew Taylor



a. 55. 80

C106-74

Kring

Samuel Kring

John

Situate in Richland Township Cambria County on the Auter Run a Branch of the South Fork of Connemaugh - Containing fifty four acres and one hundred & Eighty one perches with the usual allowance of six per cent for Roads &c. Surveyed the 15th Day of March 1849 in pursuance of a warrant Granted to John B. Kring Dated the 12th Day of February A. D. 1849.

To the
Honorable
John Laport - Surveyor General

Thos^s M^cConnell D. S.

IN TESTIMONY that the above is a copy of the original remaining on file in the Department of Internal Affairs of Pennsylvania, made conformably to an Act of Assembly approved the 16th day of February, 1833, I have hereunto set my Hand and caused the Seal of said Department to be affixed at Harrisburg, this fourth day of August 1905.

Grace B. Brown
Secretary of Internal Affairs.